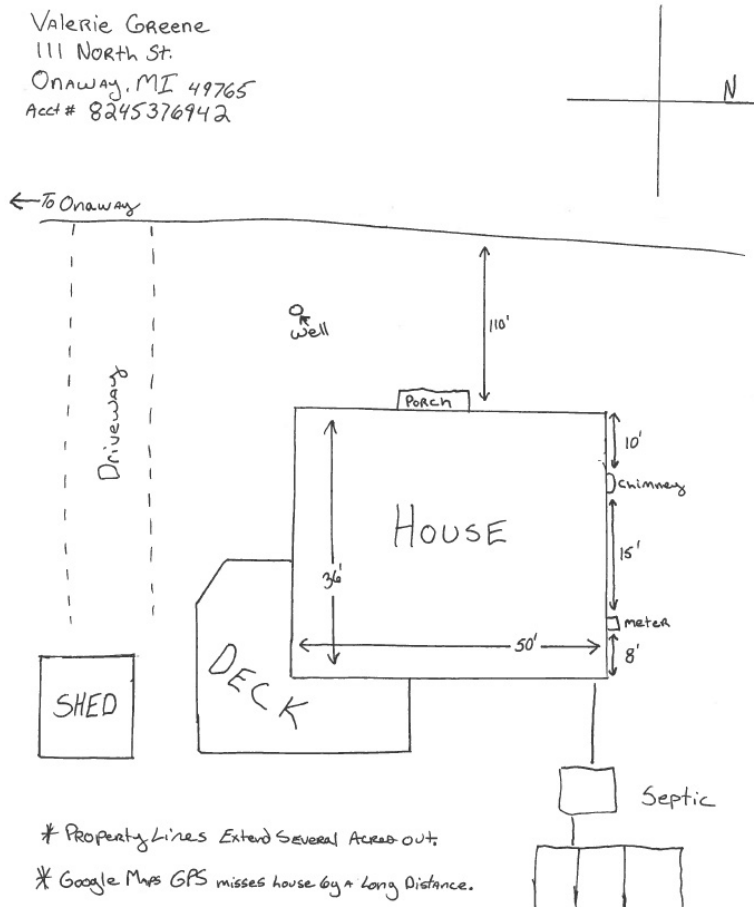


How to Create your PIE&G Connect Property MAP

PIE&G Connect recommends that all applicants draw a map to identify where equipment is buried on a property. Below are the instructions to create the map. Distances on the map are helpful but not a requirement. Reference points to objects that can be viewed on the property (sheds, wellheads, decks) are also beneficial.

- Start with a blank sheet of paper.
- Please write your name and address, and account number (*If Available*) in the top left corner.
- In the top right corner draw a + sign and put a **N** in the direction that is NORTH.
- Draw a line from left to right and write the name of the street/road where your house is located.
- Draw your house and yard in the space that is left on the paper, please be sure to include all the distinguishing landmarks. Identify the following: Property Lines, Driveway, Roadways, Water Lines and Wells, Septic Tanks and Drain Fields, Electric or Water lines between buildings, Buried Tanks or Containers, Gas Lines between buildings, Satellite Dishes or Antennas, Buried Pet Fences, Landscape Lighting
- Include any special notes at the bottom of the page.

EXAMPLE MAP:



For questions email
fiber.apps@pieg.com or call
1-800-423-6634.