

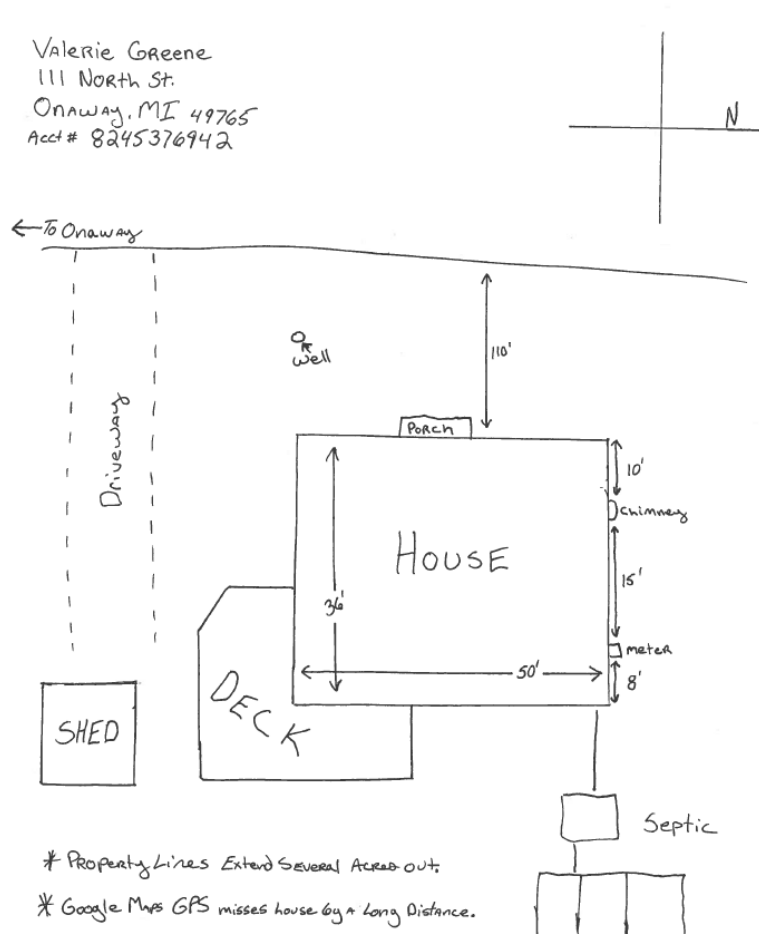


How to Create your PIE&G Connect Property MAP

In order to install the fiber optic cable to your property, PIE&G Connect needs a map that identifies where equipment is buried on your property. Below are the instructions to create the map. This is required before any work can be started. Distances on the map are helpful, but are not requirement. Reference points to objects that can be viewed on the property are also helpful (sheds, well heads, decks).

- Start with a blank sheet of paper.
- Please write your name and address, and account number (*If Available*) in the top left corner.
- In the top right corner draw a + sign and put a **N** in the direction that is NORTH.
- Draw a line from left to right and write the name of the street/road where your house is located.
- Draw your house and yard in the space that is left on the paper, please be sure to include all the distinguishing landmarks. Identify the following: Property Lines, Driveway, Roadways, Water Lines and Wells, Septic Tanks and Drain Fields, Electric or Water lines between buildings, Buried Tanks or Containers, Gas Lines between buildings, Satellite Dishes or Antennas, Buried Pet Fences, Landscape Lighting
- Include any special notes at the bottom of the page.

EXAMPLE of a PIE&G Connect Property Map



PLEASE COMPLETE AND RETURN TO
PIE&G BY
MAIL,
EMAIL,
MEMBERSERVICESGROUP@PIEG.COM

OR DROP OFF AT:
3149 MAIN ST. ONAWAY, MI
49765